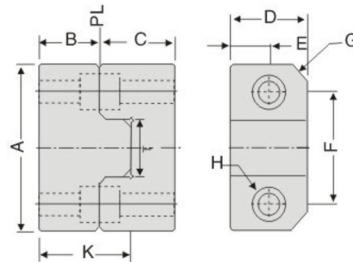


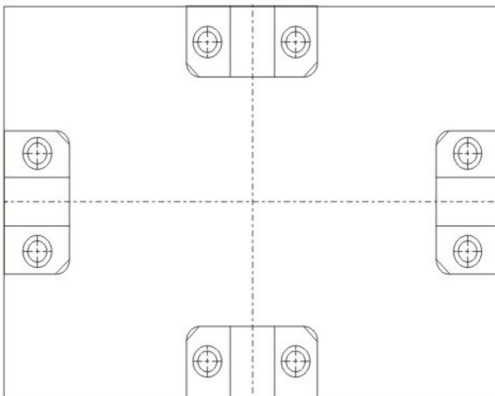
# 立式0° 定位塊組

## 0° LOCKING BLOCK SETS

塑膠模用



M材質	Hardness 硬度	Heat Treatment 熱處理
YK30	HRC56°~60°	真空處理 Vacuumed



### 特性說明/speciality

- 1.有效解決倒裝式0° 定位塊槽加工困難的問題。尤其是對大型模胚更具方便性。
- 2.用于塑件品質，尺寸精度要求特高的塑膠模具。
- 3.材質：YK30(HRC58°~60° )

- 1.Can solve the 0° locking block sets'slot processing problem effectively.
- 2.Apply to plastic mold which has very high demand about plastic product's quality and the tolerance of specification
- 3.Material: YK30(HRC58°~60° )

Type	Product code	A	B	C	D	E	F	G	H	K	T	Price 單價 RMB
JH043	LM50	50	20	25	25	12.5	34	C5	M6	30	17	400
	LM75	75	25	30	50	25	52	C8	M8	40	30	480

●Order: Type

備注：圖面以外之特殊規格可定制。  
Remark:Special product is available.