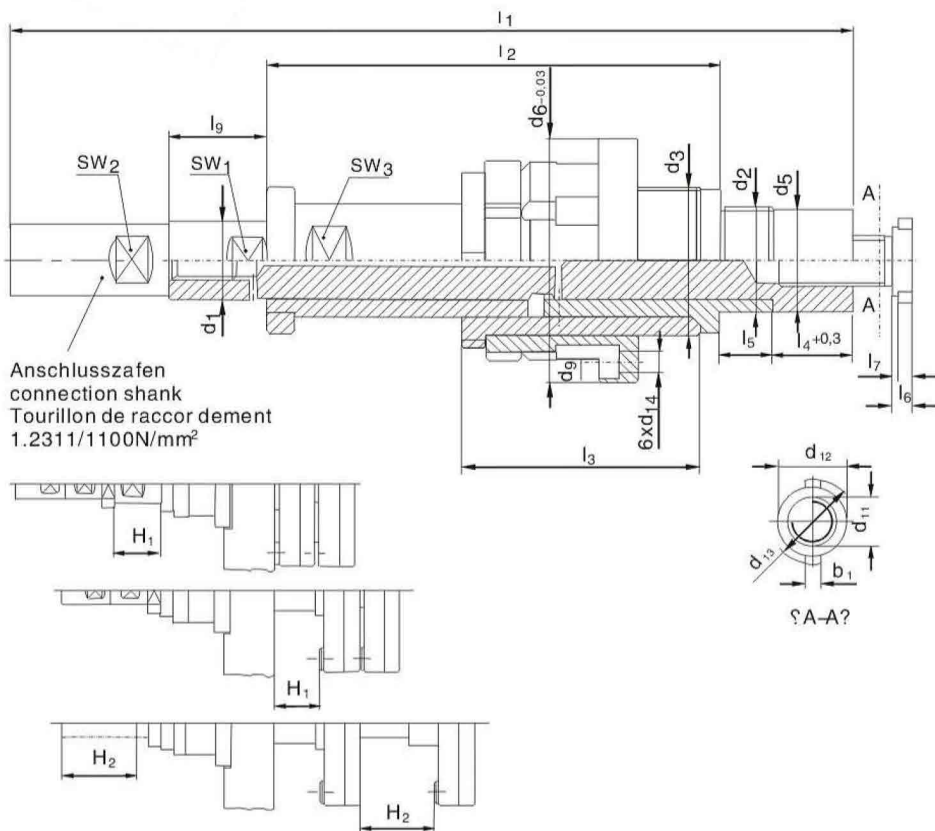




方便安裝加工機械互鎖設計，安全可靠，安裝行程計算需精準，否則產品易損壞，請根據模具荷重要求選擇適合的規格。

It is convenient for installing processing machinery interlocking design so that it is safe and reliable. The installation stroke needs to be calculated accurately. Otherwise, the product is likely to be damaged. Select appropriate specification according to load requirement of the die.



頂出系列  
Ejector series

Type	SW <sub>1</sub>	SW <sub>2</sub>	SW <sub>3</sub>	d <sub>2</sub>	d <sub>3</sub>	d <sub>5</sub>	d <sub>6</sub>	d <sub>9</sub>	d <sub>11</sub>	d <sub>12</sub>	d <sub>13</sub>	b <sub>1</sub>	l <sub>1</sub>	l <sub>2</sub>	l <sub>3</sub>	l <sub>4</sub>	l <sub>5</sub>	l <sub>6</sub>	l <sub>7</sub>	l <sub>8</sub>	H <sub>1</sub>	H <sub>max</sub>	d <sub>1</sub>	單價 unit price ¥
Z1691/13	10	10	17	M20x1	M28x1,5	18,5	50	41,6	M8x0,75	13,4	17,6	4,3	3,2	164	72	38,3		9	4	2,6	22	3-20	44	13
	17	13	12	M24x1,5	M35x1,25	22	60	48	M11x1	17,4	22	5,4	4	228	110	63	21	12	5	3,5	25	4-30	65	17
	22	17	17	M30x1,5	M45x1,5	28	75	61	M14x1	21	27	6,5	5	270	131	74	17	17	6	4	30	6-42	80	22
	30	24	22	M40x1,5	M60x1,5	38	100	82	M18x1	26	33	8,8	6	340	166	89	27	17	7	5	38	10-60	95	30
	40	32	32	M55x1,5	M75x1,5	52	125	104	M25x1,5	35	43	11	8	470	232	122	41	27	10	7	50	14-86	130	40
	52	41	41	M72x1,5	M98x2	69	150	128	M34x1,5	48	58	11	9	583	295	155	51	27	15	11	60	18-110	180	52

Order: Type No. - d<sub>1</sub> x pcs  
Z1691 - 13 x 10