

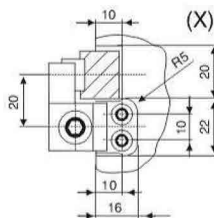
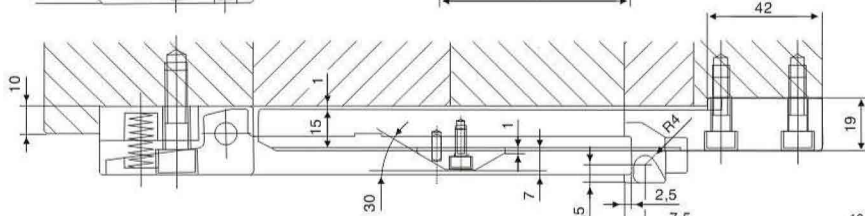
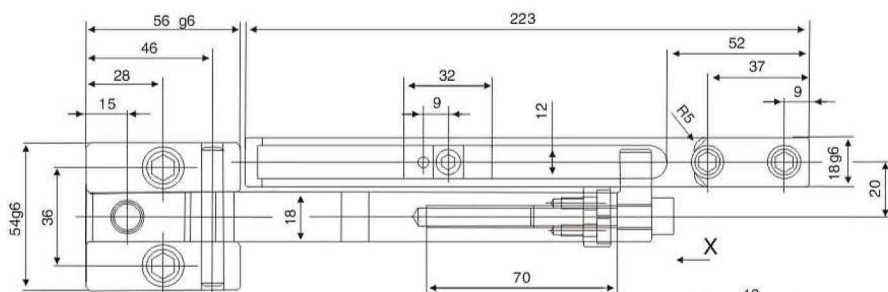
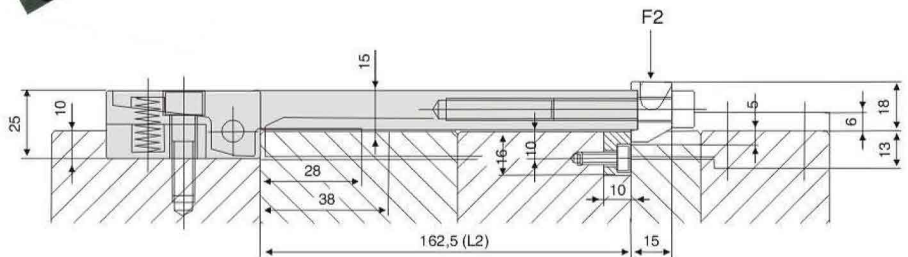
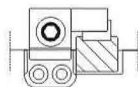
鎖模扣 Z5-31 LATCH LOCK

鎖模組件系列



特點：彈簧設計安全可靠，產品分左右可在模具加工安裝中更簡單，在模板上至少要2套並對稱安裝。

Characteristics: Spring design is safe and reliable. Left and right are separated for the product so that die processing and installation become much simpler. There shall be at least 2 sets on template for symmetrical installation.



Type	單價 ¥ Unit price
Z5-31	

L2=162.5	F2=--30N
L2=110.5	F2=--48N

max.180°C

Order: Type No. x Pcs
Z5-31 X 10

Example
使用例

